
BCL-6 (Clone GI191E/A8) Mouse Monoclonal Antibody

Specificity: Human. Others-not tested

Immunogen: Recombinant BCL-6 protein

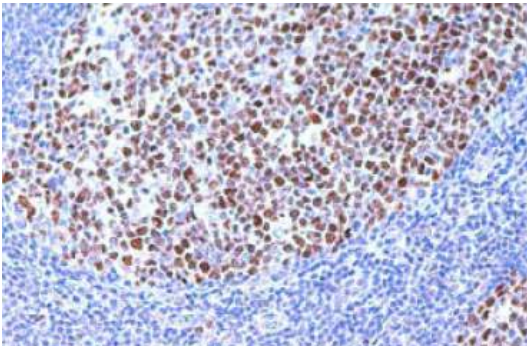
Ig Class: Mouse IgG1

Storage: Store vial at 4°C. When stored at 2-8°C, this antibody is stable for 24 months

Staining procedures: Use formalin-fixed and paraffin-embedded sections. *Retrieval conditions:* For formalin-fixed tissues, optimal results are obtained by pretreating tissues with heat-induced epitope retrieval using high pH target retrieval solution. *Detection methods:* Polymer anti-mouse/rabbit IgG detection system. *Working dilution:* 1:100-200; *Positive Control:* Tonsil or diffuse large B-cell lymphoma. *Cellular Localization:* Nuclear. *Intended Use:* In vitro diagnosis (IVD).

Description: Bcl-6 proto-oncogene product (a Kruppel-type zinc-finger protein) is mainly expressed in normal germinal center B cells and related lymphomas. Bcl-6 is involved in chromosome rearrangements at 3q27 in non-Hodgkin's lymphomas and Bcl-6 rearrangements have been detected in 33%-45% of diffuse large B cell lymphomas. Bcl-6 has been detected immunohistochemically in follicular lymphomas, diffuse large B cell lymphomas, Burkitt's lymphomas and in nodular lymphocyte predominant Hodgkin lymphoma.

Supplied As: Purified antibody with 0.2% BSA and 15mM sodium azide.



References:

1. Falini B, et al. *Ann Oncol.* 1997; 2: 101-4.
2. Dogan A, et al. *Am J Surg Pathol.* 2000; 24:846-52.
3. Carbone A, et al. *Hum Pathol.* 2010; 41:621-31.

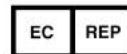
Formalin-fixed and paraffin-embedded human reactive lymph node stained with anti-BCL-6 antibody using peroxidase-conjugate and DAB chromogen. Note nuclear staining of follicular center B-cells

Cat. #Z2306 (1.0 ml)

ZETA Corporation
65 N 1st Ave, Ste 202C
Arcadia, CA 91006, USA
Tel: (626) 355-2053
<http://www.zeta-corp.com>



Zeta Corporation



Emergo Europe B.V.
Prinsessegracht 20
2514 AP The Hague
The Netherlands
Tel: +31 70 345 8570