
bcl-2 (Clone 124)

Mouse Monoclonal Antibody

Specificity: Human. Does not react with mouse and rat. Others-not known

Immunogen: A synthetic peptide, aa 41-54 (GAAPAPGIFSSQPG-Cys) of human bcl-2 protein

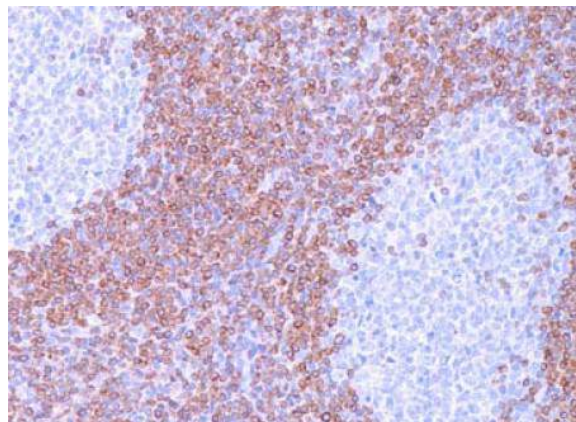
Ig Class: IgG₁/κ

Storage: Store vial at 4°C. When stored at 2-8°C, this antibody is stable for 24 months

Staining procedures: Use formalin-fixed and paraffin-embedded sections. *Retrieval conditions:* Pretreatment of deparaffinized tissue with heat-induced epitope retrieval is recommended. *Detection methods:* Polymer anti-mouse/rabbit IgG detection system. *Working dilution:* 1:100-200; *Positive Control:* Tonsil or lymph node. *Cellular Localization:* Cytoplasmic. *Intended Use:* In vitro diagnosis (IVD).

Description: Expression of bcl-2α oncoprotein inhibits the programmed cell death (apoptosis). In most follicular lymphomas, neoplastic germinal centers express high levels of Bcl-2α protein, whereas the normal or hyperplastic germinal centers are negative.

Supplied As: Purified antibody with 0.2% BSA and 15mM sodium azide.



Formalin-fixed, paraffin-embedded human reactive lymph node stained with anti-bcl-2 antibody using peroxidase-conjugate and DAB chromogen. Note cytoplasmic and membrane staining of mantle B-cells and perifollicular T-cells and no staining of reactive B-cells in the germinal centers

Cat. #Z2022 (1.0 ml)

ZETA Corporation
65 N 1st Ave, Ste 202C
Arcadia, CA 91006, USA
Tel: (626) 355-2053
<http://www.zeta-corp.com>



Zeta Corporation



Emergo Europe B.V.
Prinsessegracht 20
2514 AP The Hague
The Netherlands
Tel: +31 70 345 8570