

---

## BCA-225 (Clone Cu-18)

### Mouse Monoclonal Antibody

**Specificity:** Human. Others-not known

**Immunogen:** A synthetic peptide

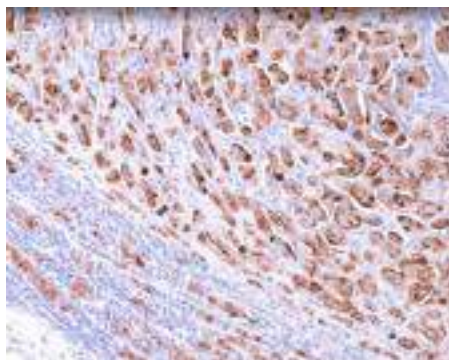
**Ig Class:** IgG<sub>1</sub>/κ

**Storage:** Store vial at 4°C. When stored at 2-8°C, this antibody is stable for 24 months

**Staining procedures:** Use formalin-fixed and paraffin-embedded sections. *Retrieval conditions:* Pretreatment of deparaffinized tissue with heat-induced epitope retrieval is recommended. *Detection methods:* Polymer anti-mouse/rabbit IgG detection system. *Working dilution:* 1:25-200; *Positive Control:* Breast carcinoma, fallopian tube, or skin. *Cellular Localization:* Cytoplasmic. *Intended Use:* In vitro diagnosis (IVD).

**Description:** Anti-BCA-225 antibody recognizes a human breast carcinoma associated glycoprotein BCA-225 (220-225kD). This protein differs in size and distribution from other breast carcinoma antigens. Unlike other antibodies against breast carcinoma antigens, this antibody does not react with benign or malignant colonic, stomach, prostate, liver, pancreas, thyroid, or parotid tissues. Adenocarcinomas of the lung, ovary and endometrium also stain with this antibody.

**Supplied As:** Purified antibody with 0.2% BSA and 15mM sodium azide.

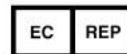


*Formalin-fixed, paraffin-embedded human breast stained with anti-BCA-225 using peroxidase-conjugate and DAB chromogen. Note cytoplasmic staining of breast carcinoma cells.*

**Cat. #Z2141 (1.0 ml)**

---

**ZETA** Corporation  
65 N 1<sup>st</sup> Ave, Ste 202C  
Arcadia, CA 91006, USA  
Tel: (626) 355-2053  
<http://www.zeta-corp.com>



Zeta Corporation

**Emergo Europe B.V.**  
Prinsessegracht 20  
2514 AP The Hague  
The Netherlands  
Tel: +31 70 345 8570