
BAP1 (Clone C-4)

Mouse Monoclonal Antibody

Specificity: Human, mouse and rat

Immunogen: Synthetic peptide against 430-729 of human BAP1

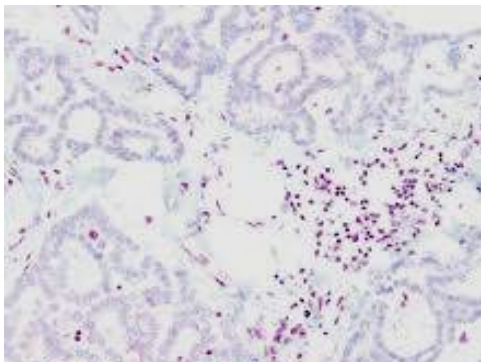
Ig Class: IgG1

Storage: Store vial at 4°C. When stored at 2-8°C, this antibody is stable for 24 months

Staining procedures: Use formalin-fixed and paraffin-embedded sections. *Retrieval conditions:* Pretreatment of deparaffinized tissue with heat-induced epitope retrieval is recommended. *Detection methods:* Polymer anti-mouse/rabbit IgG detection system. *Working dilution:* 1:100; *Positive Control:* Malignant mesothelioma. *Cellular Localization:* Nuclear. *Intended Use:* In vitro diagnosis (IVD).

Description: BAP1 (BRCA1-Associated Protein 1) was initially identified as a protein that binds to BRCA1. BAP1 is a tumor suppressor that is believed to mediate its effects through chromatin modulation, transcriptional regulation, and possibly via the ubiquitin-proteasome system and the DNA damage response pathway. Germline mutations of BAP1 confer increased susceptibility for the development of several tumors, including uveal melanoma, epithelioid atypical Spitz tumors, cutaneous melanoma, and mesothelioma. Somatic BAP1 mutations are seen in cutaneous melanocytic tumors (epithelioid atypical Spitz tumors and melanoma), uveal melanoma, mesothelioma, clear cell renal cell carcinoma, and other tumors. BAP1 immunohistochemistry is particularly useful in differentiating malignant mesothelioma (nuclear negative) vs. reactive mesothelial proliferation (nuclear positive).

Supplied As: Purified antibody with 0.2% BSA and 15mM sodium azide.



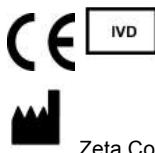
References:

1. Ventii, K.H., et al. *Cancer Res.* 68: 6953-6962.
2. Andrici, J., et al. *Hum. Pathol.* 51: 9-15.
3. Wu, D., et al. *Ann. Diagn. Pathol.* 26: 31-37.

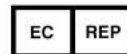
Formalin-fixed, paraffin-embedded malignant mesothelioma stained with anti-BAP1 antibody using peroxidase-conjugate and AEC chromogen. Note loss of nuclear stain in tumor cells where the background cells positive

Cat. #Z2318 (1.0 ml)

ZETA Corporation
65 N 1st Ave, Ste 202C
Arcadia, CA 91006, USA
Tel: (626) 355-2053
<http://www.zeta-corp.com>



Zeta Corporation



Emergo Europe B.V.
Prinsessegracht 20
2514 AP The Hague
The Netherlands
Tel: +31 70 345 8570