
Arginase-1 (Clone ZM30) Mouse Monoclonal Antibody

Specificity: Human. Others-not tested

Immunogen: Recombinant fragment (87 Amino acid residues around aa 1-150) of human ARG1 protein

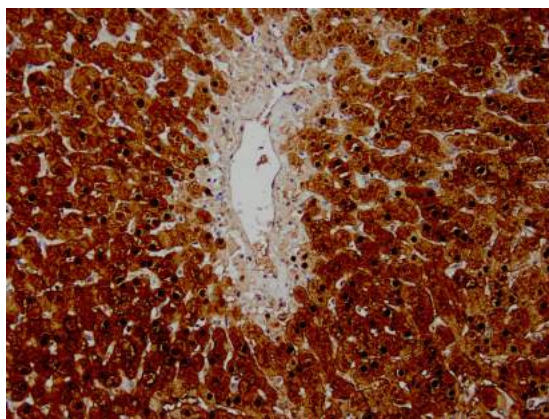
Ig Class: IgG3/κ

Storage: Store vial at 4°C. When stored at 2-8°C, this antibody is stable for 24 months

Staining procedures: Use formalin-fixed and paraffin-embedded sections. *Retrieval conditions:* For formalin-fixed tissues, optimal results are obtained by pretreating tissues with heat-induced epitope retrieval using high pH target retrieval solution. *Detection methods:* Polymer anti-mouse/rabbit IgG detection system. *Working dilution:* 1:100-200; *Positive Control:* Liver. *Cellular Localization:* Cytoplasmic. *Intended Use:* In vitro diagnosis (IVD).

Description: Recognizes a protein of 35-38kDa, which is identified as Arginase 1 (ARG1). Arginase is a manganese metallo-enzyme that catalyzes the hydrolysis of arginine to generate ornithine and urea. Arginase I and II are isoenzymes which differ in subcellular localization, regulation, and possibly function. Arginase I is a cytosolic enzyme, which is expressed mainly in the liver as part of the urea cycle, whereas arginase II is a mitochondrial protein found in a variety of tissues. Antibody to ARG-1 labels hepatocytes in normal tissues and granulocytes in peripheral blood. ARG-1 is a sensitive and specific marker for identification of hepatocellular carcinoma.

Supplied As: Purified antibody fraction from rabbit anti-serum with 0.2% BSA and 15mM sodium azide.



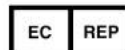
Formalin-fixed, paraffin-embedded human liver stained with anti-arginase-1 polyclonal antibody using peroxidase-conjugate and DAB chromogen. Note cytoplasmic staining of hepatocytes

Cat. #Z2335 (1.0 ml)

ZETA Corporation
65 N 1st Ave, Ste 202C
Arcadia, CA 91006, USA
Tel: (626) 355-2053
<http://www.zeta-corp.com>



Zeta Corporation



Emergo Europe B.V.
Prinsessegracht 20
2514 AP The Hague
The Netherlands
Tel: +31 70 345 8570