

---

## Arginase-1 (Clone SP156)

### Rabbit Monoclonal Antibody

**Specificity:** Human. Others-not tested

**Immunogen:** Synthetic peptide derived from the C-terminus of human arginase-1 protein

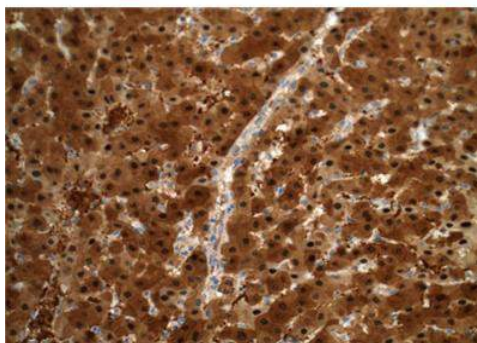
**Ig Class:** Rabbit IgG

**Storage:** Store vial at 4°C. When stored at 2-8°C, this antibody is stable for 24 months

**Staining procedures:** Use formalin-fixed and paraffin-embedded sections. *Retrieval conditions:* For formalin-fixed tissues, optimal results are obtained by pretreating tissues with heat-induced epitope retrieval using high pH target retrieval solution. *Detection methods:* Polymer anti-mouse/rabbit IgG detection system. *Working dilution:* 1:50; *Positive Control:* Liver. *Cellular Localization:* Cytoplasmic. *Intended Use:* In vitro diagnosis (IVD).

**Description:** Arginase 1, also known as liver arginase, is a binuclear manganese metalloenzyme. Arginase-1 is abundantly expressed in liver and it represents a sensitive and specific marker of benign and malignant hepatocytes that may be a useful diagnostic tool in routine surgical pathology practice. The sensitivities of arginase-1 in well, moderately, and poorly differentiated hepatocellular carcinomas are 100%, 96.2%, and 85.7%, respectively.

**Supplied As:** Purified antibody fraction from rabbit anti-serum with 0.2% BSA and 15mM sodium azide.



*Formalin-fixed, paraffin-embedded human liver stained with anti-arginase-1 polyclonal antibody using peroxidase-conjugate and DAB chromogen. Note cytoplasmic staining of hepatocytes*

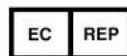
Cat. #Z2220 (1.0 ml)

---

**ZETA** Corporation  
65 N 1<sup>st</sup> Ave, Ste 202C  
Arcadia, CA 91006, USA  
Tel: (626) 355-2053  
<http://www.zeta-corp.com>



Zeta Corporation



**Emergo Europe B.V.**  
Prinsessegracht 20  
2514 AP The Hague  
The Netherlands  
Tel: +31 70 345 8570