

ALK/p80 (Clone EP302)

Rabbit Monoclonal Antibody

Specificity: Human. Others not tested

Immunogen: Synthetic peptide corresponding to Human ALK-1 aa 450 to the C-terminus

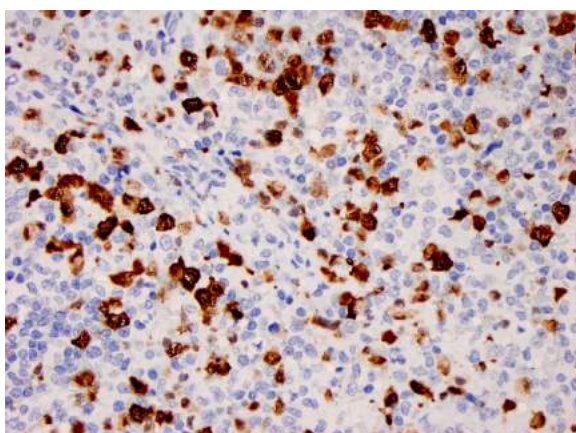
Ig Class: Rabbit IgG

Storage: Store vial at 4°C. When stored at 2-8°C, this antibody is stable for 24 months

Staining procedures: Use formalin-fixed and paraffin-embedded sections. *Retrieval conditions:* For formalin-fixed tissues, optimal results are obtained by pretreating tissues with heat-induced epitope retrieval using high pH target retrieval solution. *Detection methods:* Polymer anti-mouse/rabbit IgG detection system. *Working dilution:* 1:100; *Positive Control:* Anaplastic large cell lymphoma. *Cellular Localization:* Cytoplasmic and nuclear. *Intended Use:* In vitro diagnosis (IVD).

Description: Recognizes a human p80 protein, identified as a hybrid of the anaplastic lymphoma kinase (ALK) gene and the nucleophosmin (NPM) gene resulting from the t(2;5)(p23;q35) translocation found in 30-50% of CD30+ large cell lymphomas. This rabbit polyclonal antibody can be used to detect p80 in these lymphomas and may also be used to detect a recently described subtype of large B cell lymphoma, which expresses the full-length ALK protein.

Supplied As: Purified antibody with 0.2% BSA and 15mM sodium azide.



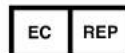
References:

1. Iwahara T, et al. *Oncogene*. 1997; 14:439-49.
2. Morris SW. *Science*. 1994; 263:1281-4.

Left: Formalin-fixed, paraffin-embedded anaplastic large cell lymphoma stained with anti-ALK antibody using peroxidase-conjugate and DAB chromogen. Note cytoplasmic stain of lymphoma cells

Cat. #Z2542 (1.0 ml)

ZETA Corporation
65 N 1st Ave, Ste 202C
Arcadia, CA 91006, USA
Tel: (626) 355-2053
<http://www.zeta-corp.com>



Zeta Corporation

Emergo Europe B.V.
Prinsessegracht 20
2514 AP The Hague
The Netherlands
Tel: +31 70 345 8570