

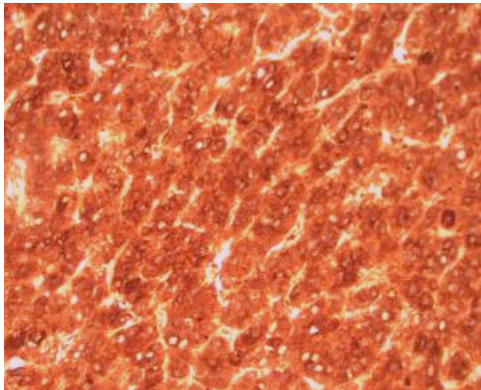
## $\alpha$ -fetoprotein (AFP) Rabbit Polyclonal Antibody

- Specificity:** Human. Others-not tested
- Immunogen:** Human alpha-fetoprotein purified from human cord serum
- Ig Class:** Rabbit IgG
- Storage:** Store vial at 4°C. When stored at 2-8°C, this antibody is stable for 24 months

**Staining procedures:** Use formalin-fixed and paraffin-embedded sections. *Retrieval conditions:* For formalin-fixed tissues, optimal results are obtained by pretreating tissues with heat-induced epitope retrieval using high pH target retrieval solution. *Detection methods:* Polymer anti-mouse/rabbit IgG detection system. *Working dilution:* 1:50-200; *Positive Control:* Fetal liver or hepatocellular carcinoma. *Cellular Localization:* Cytoplasmic. *Intended Use:* In vitro diagnosis (IVD).

**Description:** AFP is normally synthesized in the liver, intestinal tract, and yolk sac of the fetus. Antibody to AFP has been shown to be useful in detecting hepatocellular carcinomas (HCC) and germ cell neoplasm, especially yolk sac tumors.

**Supplied As:** Purified antibody with 0.2% BSA and 15mM sodium azide.



### References:

1. Mizejewski GJ. *Biochemistry (Mosc)*. 2000; 65:117-33.
2. Yusof YA, et al. *Anal Quant Cytol Histol*. 2003; 25:332-8.

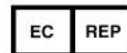
*Formalin-fixed, paraffin-embedded human hepatocellular carcinoma stained with anti-AFP polyclonal antibody using peroxidase-conjugate and DAB chromogen. Note cytoplasmic staining of tumor cells*

**Cat. #Z2068 (1.0 ml)**

**ZETA** Corporation  
65 N 1<sup>st</sup> Ave, Ste 202C  
Arcadia, CA 91006, USA  
Tel: (626) 355-2053  
<http://www.zeta-corp.com>



Zeta Corporation



**Emergo Europe B.V.**  
Prinsessegracht 20  
2514 AP The Hague  
The Netherlands  
Tel: +31 70 345 8570